

PATRIOT
EXCHANGE
PROGRAMSM



Medical insurance for individuals and groups
involved in educational or cultural exchange



Hello. Hola. Hallo. Hej. 您好.

You can greet someone in a foreign country in many ways. When you travel, stay safe and secure by saying hello to Patriot Exchange Program, a one-of-a-kind international travel medical insurance plan that brings you Global Peace of Mind® when you're traveling abroad.

GLOBAL
peace of mind®



Benefits are subject to exclusions and limitations. This is only a summary and does not supersede in any way the Certificate of Insurance and governing policy documents (together the "Insurance Contract"). The Insurance Contract is the only source for the actual benefits provided.



Why Patriot Exchange Program?

Traveling abroad can be an exciting experience, especially when you're involved in an educational or cultural exchange program. But what would happen if you became ill or injured while away from home? Your experience can quickly turn frightening if you're not prepared for a medical emergency.

Whether your trip takes you abroad for a few weeks or an entire year, your cultural exchange experience should be an enjoyable one. You have enough to worry about when you're traveling. Don't let your medical coverage be an uncertainty. International Medical Group® (IMG®) has developed the Patriot Exchange ProgramSM to provide you, your group, and your dependents traveling with you Coverage Without Boundaries®. The plan offers a package of international benefits available 24 hours a day. Simply select the plan option that best fits your needs.

The Patriot Exchange Program is designed to meet the U.S. visa insurance requirements for individuals and groups of two or more students studying abroad or participating in a cultural exchange program, including J1 and J2 visa holders. Coverage may be purchased for spouses and unmarried, dependent children traveling with the student/participant. Individuals and groups can select from different plan options—\$50,000*, \$100,000, \$250,000, and \$500,000 maximum limit per illness/injury. This program also offers two different areas of coverage, and an optional add-on rider for high school sports, personal liability, and legal assistance. In addition, groups may purchase annually-renewable long-term plans that have the flexibility to be tailored to meet specific needs of each program.

*The \$50,000 maximum limit per illness/injury option does not comply with J1 and J2 visa requirements.



Our focus on Service, Strength, and Safety Solutions provides you with the ultimate advantage: Global Peace of Mind.

SERVICE *Help when and where you need it.*

Nobody wants to experience an emergency while traveling the world, but if you do, you'll want a team you can trust to have your back. IMG's expert staff is here for you 24/7. We're accustomed to working in multiple time zones, languages, and currencies, so rest assured we have the training to assist you—even in remote and hazardous locations. Our international and U.S. provider networks include more than one million physicians and facilities across the globe, giving you access to quality care while away from your primary care team. Our innovative technology allows you to manage your claims, your account, and search for providers through our online portal and mobile app around the clock.

STRENGTH *A market leader you can trust.*

You can feel confident with IMG knowing our industry expertise has led us to serve millions of customers worldwide since 1990. Owned by SiriusPoint, a multi-billion-dollar insurance industry leader and rated "A-" by A.M. Best, an independent analyst of the insurance industry, IMG has a strong financial backing and vision to become the preeminent provider of travel and health safety solutions. With loyal customers ranging from Fortune 500 companies, universities, to individuals and other insurance companies, our personalized offerings allow us to meet the needs of nearly anyone traveling internationally.

SAFETY SOLUTIONS *Products and services designed with your safety in mind.*

Pursuing an education away from your home country is already stressful. We know your safety while studying abroad is important to you, so IMG's Patriot Exchange Program has solutions designed to protect you and give you Global Peace of Mind.



PHYSICAL HEALTH

You can't plan when you get sick, and unfortunately, it can happen anytime and anywhere. Medical bills can be expensive, and IMG plans provide the cross-border medical coverage you need for unexpected medical care and routine visits.



MENTAL WELLNESS

Being away from your support system can be challenging. IMG provides access to mental health services, like virtual counseling, to help with the transition as you adapt to cultural differences, adjust to a change in education, and navigate new relationships while you're away from loved ones.



PERSONAL PROPERTY

There are some belongings you know you can't live without. IMG has you covered and can reimburse costs if your mobile device is lost, stolen, or damaged during your travels abroad.



CRISIS SUPPORT

Navigating an emergency in a foreign country is never easy. That's why IMG offers a multilingual staff of nurses, doctors, and case managers provide 24/7 assistance services to facilitate a response to urgent and emergency situations, such as evacuations or search and rescue missions.



FINANCIAL PROTECTION

Costs can add up while seeking medical treatment. However, access to IMG's international physician and provider networks and pharmacy discount programs can help you save on out-of-pocket medical expenses and prescription medications.



PATRIOT EXCHANGE PROGRAM
SUMMARY OF BENEFITS

Eligible Medical Expenses are limited to Usual, Reasonable, and Customary Limits per Period of Coverage unless stated as Maximum Limit

PLAN DETAILS

PHYSICAL HEALTH

Coverage Limit / Maximum Amount for Eligible Medical Expenses			
Plan Details	In-Network	Out-of-Network	International
Maximum Limit	\$5,000,000		
Deductible Options	\$0, \$100, \$250, or \$500 per illness or injury available		
Coinsurance for Eligible Medical Expenses			
Coinsurance ▪ In addition to Deductible	Plan pays 90% Insured pays 10%	Plan pays 80% Insured pays 20%	Plan pays 100% Insured pays 0%
Out of Pocket Maximum	\$1,000	Up to the Maximum Limit	\$0
Precertification			
Interfacility Ambulance Transfer, Emergency Medical Evacuation	No coverage if Pre-certification requirements are not met		
All other Treatments & supplies	50% reduction of Eligible Medical Expenses if Pre-certification requirements are not met		
Pre-existing Conditions			
Pre-existing conditions ▪ Charges resulting directly or indirectly from or relating to any Pre-existing Condition that existed within 36 months prior to the Effective Date are excluded until the Insured Person has maintained 12 months of continuous coverage under this insurance.	Period of Coverage Limit (after 12 months): \$500 Maximum Limit: \$1,500		
Student Health Center			
Copayment per visit ▪ Not subject to the per Illness or Injury Deductible ▪ Copayment is not applicable if the Declaration states a \$0 Deductible	\$5		
Coinsurance	Plan pays 100% Insured pays 0%		
Inpatient/Outpatient Benefits			
Eligible Medical Expenses	90%	80%	100%
Physician / Specialist Visit ▪ Maximum Visits per day: 1 (unless visit is for a different medical/surgical specialty)	90%	80%	100%
Urgent Care ▪ Not subject to Deductible ▪ Copayment: \$50 ▪ Copayment is not applicable if the Declaration states a \$0 Deductible	90%	80%	100%
Walk-in Clinic ▪ Not subject to Deductible ▪ Copayment: \$20 ▪ Copayment is not applicable if the Declaration states a \$0 Deductible	90%	80%	100%
Hospital Emergency Room ▪ Injury: Not subject to Emergency Room Deductible ▪ Illness: Subject to a \$500 Deductible for each Emergency Room visit for Treatment that does not result in a direct Hospital admission.	90%	80%	100%
Hospitalization / Room & Board ▪ Average semi-private room rate ▪ Includes nursing, miscellaneous and Ancillary Services	90%	80%	100%
Intensive Care	90%	80%	100%
Bedside Visit ▪ Not subject to Deductible ▪ Maximum Limit: \$1,500 ▪ Hospitalized in an Intensive Care Unit ▪ Refer to the BEDSIDE VISIT provision for further details	90%	80%	100%
Outpatient Surgical / Hospital Facility	90%	80%	100%
Laboratory	90%	80%	100%
Radiology / X-ray	90%	80%	100%
Pre-admission Testing	90%	80%	100%
Surgery	90%	80%	100%

Groups may also purchase a customizable long-term plan. Any coverages, benefits and premium rates offered are in U.S. Dollars. Benefits are subject to exclusions and limitations. This is only a summary and does not supersede in any way the Certificate of Insurance and governing policy documents (together the "Insurance Contract"). The Insurance Contract is the only source of the actual benefits provided.

PATRIOT EXCHANGE PROGRAM
SUMMARY OF BENEFITS
 (CONTINUED)

Eligible Medical Expenses are limited to Usual, Reasonable, and Customary Limits per Period of Coverage unless stated as Maximum Limit

PHYSICAL HEALTH

MENTAL WELLNESS

CRISIS SUPPORT

Inpatient/Outpatient Benefits (Continued)			
Plan Benefits	In-Network	Out-of-Network	International
Pre-admission Testing	90%	80%	100%
Surgery	90%	80%	100%
Reconstructive Surgery <ul style="list-style-type: none"> Surgery is incidental to and follows Surgery that was covered under the plan 	90%	80%	100%
Assistant Surgeon <ul style="list-style-type: none"> 20% of the primary surgeon's eligible fee 	90%	80%	100%
Anesthesia	90%	80%	100%
Durable Medical Equipment	90%	80%	100%
Chiropractic Care <ul style="list-style-type: none"> Medical order or Treatment plan required 	90%	80%	100%
Physical Therapy <ul style="list-style-type: none"> Maximum Visits per day: 1 Medical order or Treatment plan required 	90%	80%	100%
Extended Care Facility <ul style="list-style-type: none"> Upon direct transfer from an acute care Hospital 	90%	80%	100%
Home Nursing Care <ul style="list-style-type: none"> Provided by a Home Health Care Agency Upon direct transfer from an acute care Hospital 	90%	80%	100%
Prescription Drugs and Medication			
The following Prescription Drugs and Medication Period of Coverage limit accumulates toward the Maximum Limit			
Prescription Drugs and Medication <ul style="list-style-type: none"> Period of Coverage limit: \$250,000 per person Obtained through Retail Pharmacy, Inpatient and Outpatient Surgery, Emergency Room and Outpatient Office Visits Dispensing maximum for Retail Pharmacy: 90 days per prescription 	N/A	90%	100%
Mental or Nervous / Substance Abuse			
Inpatient Mental or Nervous / Substance Abuse <ul style="list-style-type: none"> Maximum Limit: \$10,000 Not covered if incurred at the Student Health Center 	90%	80%	100%
Outpatient Mental or Nervous / Substance Abuse <ul style="list-style-type: none"> Maximum Limit per day: \$50 Maximum Limit: \$500 Not covered if incurred at the Student Health Center 	90%	80%	100%
Emergency Services			
Emergency Local Ambulance <ul style="list-style-type: none"> Subject to Deductible Injury Illness resulting in a Hospitalization admission 	100%	100%	100%
Emergency Medical Evacuation <ul style="list-style-type: none"> Maximum Limit: \$50,000 Must be approved in advance and coordinated by the Company 	100%	100%	100%
Emergency Reunion <ul style="list-style-type: none"> Maximum Limit: \$15,000 Maximum Days: 15 Meal Maximum per day: \$25 Reasonable and necessary travel costs and accommodations Must be approved in advance by the Company 	100%	100%	100%
Interfacility Ambulance Transfer <ul style="list-style-type: none"> Up to the per Injury or Illness limit Services rendered in the United States Transfer must be a result of an Inpatient Hospital admission 	100%	100%	N/A
Political Evacuation and Repatriation <ul style="list-style-type: none"> Maximum Limit: \$10,000 Must be approved in advance by the Company 	100%	100%	100%

6 Groups may also purchase a customizable long-term plan. Any coverages, benefits and premium rates offered are in U.S. Dollars. Benefits are subject to exclusions and limitations. This is only a summary and does not supersede in any way the Certificate of Insurance and governing policy documents (together the "Insurance Contract"). The Insurance Contract is the only source of the actual benefits provided.

PATRIOT EXCHANGE PROGRAM
SUMMARY OF BENEFITS
 (CONTINUED)

Eligible Medical Expenses are limited to Usual, Reasonable, and Customary Limits per Period of Coverage unless stated as Maximum Limit

CRISIS SUPPORT

PHYSICAL HEALTH

FINANCIAL PROTECTION

PERSONAL PROPERTY

CRISIS SUPPORT

PERSONAL PROPERTY

Emergency Services (Continued)				
Plan Benefits	In-Network	Out-of-Network	International	
Repatriation for Medical Treatment <ul style="list-style-type: none"> Maximum Benefit: \$100,000 (in addition to the plan per illness or injury limit) Approved in advance and coordinated by the Company Refer to the REPATRIATION FOR MEDICAL TREATMENT provision for further details 	100%	100%	100%	
Return of Mortal Remains <ul style="list-style-type: none"> Maximum Limit: \$25,000 Local Burial / Cremation at place of death (Maximum Limit: \$5,000) Return of Insured Person's Mortal Remains to Country of Residence Must be approved in advance by the Company 	100%	100%	100%	
Other Services				
Terrorism <ul style="list-style-type: none"> Maximum Limit: \$50,000 	100%	100%	100%	
Dental Treatment <ul style="list-style-type: none"> Period of Coverage Limit: \$350 (Treatment due to Unexpected pain to sound, natural teeth) <ul style="list-style-type: none"> Period of Coverage Limit per Injury: \$500 (Non-emergency Treatment at a Dental Provider due to an Accident)	N/A	90%	100%	
Traumatic Dental Injury <ul style="list-style-type: none"> Subject to Deductible and Coinsurance Up to the Maximum Limit Treatment at a Hospital Facility due to an Accident Additional Treatment for the same Injury rendered by a Dental Provider will be paid at 100% 	90%	80%	100%	
	Accidental Death: 100% of Principal Sum			
	Accidental Dismemberment:			
	Loss	Percent of Principal Sum		
	Sight of 1 eye	50%		
	1 hand or 1 foot	50%		
	1 hand and loss of sight of 1 eye	100%		
	1 foot and loss of sight of 1 eye	100%		
	1 hand and 1 foot	100%		
	Both hands or both feet	100%		
	Sight of both eyes	100%		
Accidental Death & Dismemberment <ul style="list-style-type: none"> Principal Sum Maximum: \$25,000 Death must occur within 90 days of the Accident 				
Incidental Trip <ul style="list-style-type: none"> Maximum days: 14 Country of Residence is outside the United States Refer to the INCIDENTAL TRIP provision for further details 	90%	80%	100%	
Optional Add-On Rider (Group & Individual)				
Personal Liability <ul style="list-style-type: none"> Injury to third party: \$2,000 per period of coverage limit after \$100 deductible Damage to third party's property: \$500 per period of coverage limit after \$100 deductible 		100%		
Lost Personal Property <ul style="list-style-type: none"> \$250 per period of coverage limit 		100%		
Limited High School and College Sports <ul style="list-style-type: none"> Company pays 100% after deductible is met Available with and without Collision Sports 		100%		
Legal Assistance	\$500 period of coverage limit	\$500 period of coverage limit	\$500 period of coverage limit	
Optional Mobile Device Protection Rider (Individual Only)				
Mobile Device Protection Rider	Coverage for repair or replacement of your cell phone if it is lost, stolen or accidentally damaged on your trip.			

Groups may also purchase a customizable long-term plan. Any coverages, benefits and premium rates offered are in U.S. Dollars. Benefits are subject to exclusions and limitations. This is only a summary and does not supersede in any way the Certificate of Insurance and governing policy documents (together the "Insurance Contract"). The Insurance Contract is the only source of the actual benefits provided.

PEP INCLUDED SERVICES

FINANCIAL PROTECTION

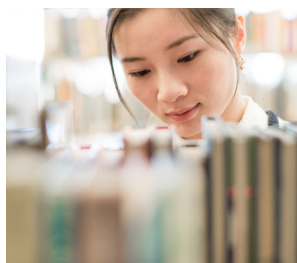
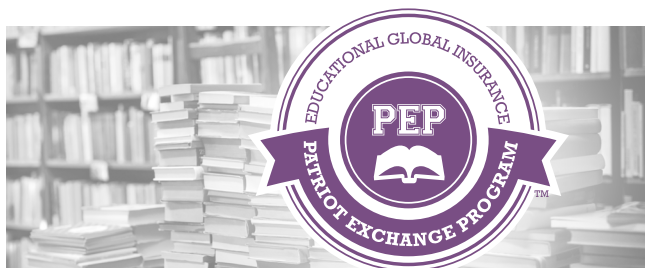
Pharmacy Discount Savings

Universal Rx is a discount savings program that allows you to purchase prescriptions from one of 35,000 participating pharmacies in the U.S. and receive the lower of **1)** Universal Rx contract price or **2)** the pharmacy regular retail price. This program is not insurance coverage; it is purely a discount program.

Telehealth *(For groups only)*

Telehealth provides access to a national network of board-certified doctors and pediatricians in the U.S. who are available 24 hours a day, seven days a week, 365 days a year to help diagnose, treat and prescribe medication (when necessary and available) for many non-emergent medical issues via phone or online video consultations. Telehealth does not replace existing primary care physician relationships, but supplements them as a convenient, affordable alternative for non-emergency medical care. The use of Telehealth will be considered as treatment inside the U.S. - PPO Network.

PHYSICAL HEALTH



PEP OPTIONAL RIDERS

PHYSICAL HEALTH

Adventure Sports Rider *(For Individuals and groups)*

The Adventure Sports Rider is available on the Patriot Exchange Program for individuals and groups, and their dependents, up to the age of 65. Certain activities designated as adventure sports can be covered up to the maximums listed below. Certain activities are never covered, regardless of whether or not you purchase the Adventure Sports Rider. For a list of all the activities which can be considered to be adventure sports, a sample rider can be provided upon request.

AGE	MAXIMUM LIMIT
Through age 49	\$50,000
50 - 59	\$30,000
60 - 64	\$15,000

FINANCIAL PROTECTION

Chaperone/Faculty Leader Trip Interruption Rider *(For groups only)*

Groups may request the Chaperone/Faculty Leader Trip Interruption rider which offers up to \$3,000 in benefits. In the event of the original chaperone/leader's hospitalization, a relative's unexpected death, or travel plans must be cancelled as a result of a break-in or destruction due to forces of nature at his/her residence, the subsequent chaperone/faculty leader can be reimbursed for the certain transportation costs to join the group.

PERSONAL PROPERTY

Mobile Device Protection Rider *(For Individuals only)*

Cell phones are essential when travelling internationally to keep you safe, connect with friends and family back home, and to take photos of your travels. Device protection is for individuals and provides coverage for repair or replacement of your cell phone when it becomes lost, stolen, or accidentally damaged. With Mobile Device Protection, you can continue your travels and stay digitally connected wherever you are in the world.

FINANCIAL PROTECTION

Optional Add-on Rider *(For Individuals and groups)*

For policyholders looking for maximum protection we now offer our Add-on Rider, covering personal liability, lost personal property, legal assistance up to \$500 per period of coverage, and limited High School and College sports, which is available with and without Collision Sports coverage.

PEP PLAN INFORMATION

Eligibility

To be eligible to apply to the Patriot Exchange Program plan, you must:

- » Be a participant: a student, scholar, intern, teacher, or trainee enrolled in an educational or cultural exchange program for the purposes of teaching, study, research, or receiving on the job training for a temporary period of time
- » Be the spouse of a participant or children of a participant and residing outside his/her primary country of residence for a temporary period of time. Primary applicant must hold a J, M, F, or A visa
- » Be at least 31 days old but not yet 65 years old
- » Be physically and legally residing in the destination country with the intent to reside there for at least 30 days on the effective date and at renewal

Enrollment Process

Before you begin your travel, simply apply online or fill out the application and calculate the estimated premium for the time period you, your group, and/or your dependents will be traveling. Once you have completed the application, return it to your insurance agent and/or IMG.

Eligible individuals listed on the application and for whom premiums have been paid will be covered from the latest of the following dates:

1. The date IMG approves your completed application and receives the appropriate premium
2. The date you depart from your country of residence
3. The date requested on your application

Fulfillment Kits

IMG processes applications in a quick, timely manner. Once processing is complete, IMG will email the fulfillment kit(s) to the email listed in the application. The fulfillment kit(s) will include an IMG identification card(s), and the insurance certificate providing a complete description of the rights and benefits under the contract.

Conditions of Coverage

1) Coverage and benefits are subject to the deductible, limits, and coinsurance, and all terms of the certificate of insurance and master policy and all governing documents, as summarized in the certificate of insurance. **2)** Coverage under a Patriot Exchange Program plan is secondary to any other coverage. **3)** Coverage and benefits are for eligible medical expenses which are medically necessary and usual, reasonable, and customary. **4)** Charges must be administered or ordered by a licensed physician. **5)** Charges must be incurred during the period of coverage.

Renewal of Coverage

Eligible insureds can request coverage under the plan be renewed a minimum of five (5) days, up to a maximum of 48 continuous months, as long as the premium is paid when due and the insured continues to meet the eligibility requirements of the plan.

How Does the United States Affordable Care Act (ACA) Affect My Coverage?

Non-U.S. Citizens: As non-resident aliens, international students, scholars, and people involved in cultural exchange programs on F, J, M, or Q visas (and certain family members) are not subject to the individual mandate for their first five years in the U.S. All other J categories (teacher, trainee, work and travel, au pair, high school, etc.) are not subject to the individual mandate if in the U.S. for two of the past six years. Since international students are not subject to the mandate, they are not required to purchase a plan that meets ACA requirements and can purchase the Patriot Exchange Program.

U.S. Citizens: Under the ACA, all U.S. citizens, nationals, and resident aliens are required to purchase minimum essential coverage (ACA-compliant coverage), unless they are exempt. Exempt U.S. citizens include U.S. citizens who reside outside of the U.S. for 330 of any 365-day period, or have a tax home (main place of work or employment, or if you don't have a main place of work or employment, your main residence) in a foreign country, and are a bona fide resident of a foreign country.

Please note that this insurance is not subject to, and does not provide benefits required by, ACA. Since January 1, 2014, ACA requires U.S. citizens, U.S. nationals and resident-aliens to obtain ACA compliant insurance coverage unless they are exempt from ACA (international students on F, J, M and Q visas (and certain family members of students) are not subject to the individual mandate for their first 5 years in the U.S. All other J categories - teacher, trainee, work and travel, au pair, high school, etc. - are not subject to the individual mandate for 2 years out of the past six). Penalties may be imposed on persons who are required to maintain ACA compliant coverage but do not do so. Eligibility to purchase or renew this product, or its terms and conditions, may be modified or amended based upon changes to applicable law, including ACA. Please note that it is solely your responsibility to determine if ACA is applicable to you and the Company and IMG shall have no liability whatsoever, including for any penalties that you may incur, for your failure to obtain required ACA compliant coverage. For information on whether ACA applies to you or whether you are eligible to purchase the Patriot Exchange Program, please see IMG's Frequently Asked Questions at imglobal.com/en/client-resources/PPACA-FAQ.aspx. The materials available on this website are for informational purposes only and not for the purpose of providing legal advice. You should contact your attorney to obtain advice with respect to any particular issue or problem. This brochure is intended to convey general information only and not to provide legal advice or opinions.

PEP CLAIMS PROCEDURE

Precertification

Certain treatment and supplies including hospital admission, inpatient or outpatient surgery, and other procedures as noted in the certificate wording must be precertified for medical necessity, which means the insured person or their attending physician must communicate with an IMG representative at the number listed on the IMG ID card prior to admission to a hospital before receiving certain treatments and supplies, or performance of a surgery. In case of an emergency admission, the precertification must be made within 48 hours of the admission, or as soon as reasonably possible. If a hospital admission or a surgery is not precertified, eligible claims and expenses will be reduced by 50 percent. It is important to note that precertification is only a determination of medical necessity, not an assurance of coverage, verification of benefits, or a guaranty of payment. All medical expenses eligible for reimbursement must be medically necessary and will be paid or reimbursed at usual, reasonable and customary rates. Please refer to the certificate wording for full details of the precertification requirements.

Contact IMG at **+1.317.655.4500** or **precertification@imglobal.com**. Please be sure to send any private information in a secure manner.

Note: You may begin the precertification process through MyIMG or the Client Resources section of imglobal.com. Simply look for the precertification option. You will be asked to provide the required information, which can then be submitted electronically. Once we have received all required information and medical records, our utilization management and review team will review the information provided and normally responds to the insured person or the provider within 2 business days. Please note that this online service will only initiate the process for treatment and supplies outlined in the contract, and it should not be used to request precertification for emergency admissions, procedures, or evacuations.



How to File a Claim

If a provider doesn't submit a claim on your behalf, the fastest and most convenient way to submit a claim is through our online customer portal, MyIMG. If it is your first time using MyIMG, follow these steps to register:

- » Go to <http://www.imglobal.com/member> and click "Create an Account"
- » On the next screen, enter your Certificate, Policy Number, or Insured/Member ID, and click "Continue"
- » Once the system verifies this information, follow the remaining steps to complete your registration
- » Once you've created a MyIMG account, follow these steps to submit a claim:
- » Log in to the MyIMG portal, click "Claims"
- » In the drop-down menu, click "My Claims"
- » On the next screen, select the policy or certificate. Click "Submit New Claim" and follow the prompts to complete your submission

Self-Service Member Portal



Along with filing claims online, MyIMGSM provides service at your fingertips, giving you the information and tools to manage your IMG plans anytime, anywhere, through award-winning, easy-to-use technology. You'll have immediate access to these important resources online, including our 24/7/365 service centers, plan document access, claims management tools, Explanations of Benefits, and much more.

U.S. Network Access



UnitedHealthcare provides travelers in the U.S. with direct access to one of the largest networks of providers in the U.S. that includes:

- » over 1.4M physicians and outpatient care providers
- » access to over 93K medical facilities including:
- » over 6800 hospitals
- » over 6300 ambulatory surgery centers
- » 14K urgent care/convenience clinics
- » more than 22K labs
- » and over 45K other facilities

International Provider AccessSM



Travelers outside of the U.S. can also enjoy access to quality healthcare worldwide with our proprietary IPA network that includes:

- » Over 45,000 physicians and facilities
- » Direct billing arrangements that minimize time and upfront expense



PATRIOT
EXCHANGE
PROGRAMSM



Producer Contact Information

**MISSIONARY INSURANCE GROUP,
INC.**

**1329 CROFTON PARK DRIVE
COLUMBIA, TN 38401**

Phone: 615-975-6369



Coverage is underwritten and issued by SiriusPoint Specialty Insurance Corporation, rated "A-" (excellent) by A.M. Best and A- by Standard & Poor's (at the time of printing).

This invitation to inquire allows eligible applicants an opportunity to seek information about the insurance offered and is limited to a brief description of any loss for which benefits may be payable.

Benefits are offered as described in the Insurance Contract. Benefits are subject to all deductibles, coinsurance, provisions, terms, conditions, limitations and exclusions in the Insurance Contract. Certain contracts do contain a pre-existing condition exclusion and do not cover losses or expenses related to a pre-existing condition.

This brochure contains many of the valuable trademarks, names, titles, logos, images, designs, copyrights and other proprietary materials owned and registered and used by International Medical Group, Inc. and its representatives throughout the world. © 2007-2026 International Medical Group, Inc. All rights reserved.

The UnitedHealthcare name and logo are registered trademarks of UnitedHealth Group in the U.S. and other jurisdictions.

